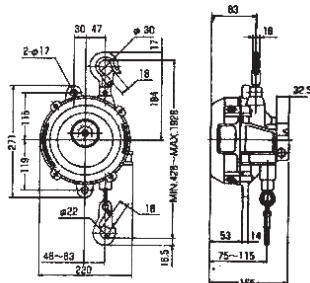


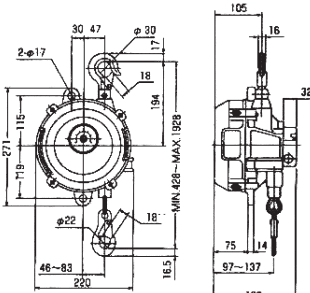
# Spring Balancer

## Spring Balancer



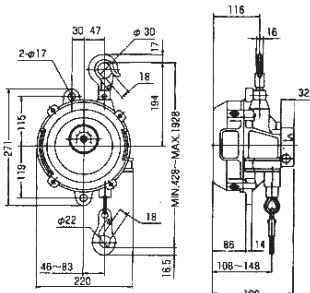
### KOSB-22, 30

Model	Range Of Application (kg)	Wire		Weight (kg)	Packing
		External Diameter (Ø)	L (M)		
KOSB-22	15,0~22,0	4,8mm	Coated Wire	1,8	1Box X 1EA
KOSB-30	22,0~30,0	4,8mm	Coated Wire	1,8	1Box X 1EA



### KOSB-40, 50

Model	Range Of Application (kg)	Wire		Weight (kg)	Packing
		External Diameter (Ø)	L (M)		
KOSB-40	30,0~40,0	4,8mm	Coated Wire	1,8	1Box X 1EA
KOSB-50	40,0~50,0	4,8		1,8	1Box X 1EA



### KOSB-60, 70, 80

Model	Range Of Application (kg)	Wire		Weight (kg)	Packing
		External Diameter (Ø)	L (M)		
KOSB-60	50,0~60,0	4,8mm	Coated Wire	1,8	1Box X 1EA
KOSB-70	60,0~70,0	4,8mm	Coated Wire	1,8	1Box X 1EA
KOSB-80	70,0~80,0	4,8mm	Coated Wire	1,8	1Box X 1EA

## Spring Balancers (Notice in use)

- Do not disassemble it carelessly. If the spring inside may bounce up when disassembling, there is a risk of injury.
- When you adjust the spring tension, hold spring and hexagonal wrench tightly then turn it. Otherwise, hexagonal wrench can cause the injury.
- Rechet stopper must be fixed tightly without failure.
- When a spring balancer keeps swinging(especially inside of a ship), do fix it using fitting holes bolts.